

DISCLAIMER: Emtion Pty Ltd, Trading as Microtec Engineering, do not take any responsibility for any damage caused installing this product

MICROTEC ENGINEERING

EXTERNAL WARNING LIGHT INSTALLATION INSTRUCTIONS

TADANO AML M1/M2 (TR)

ESTIMATED TIME OF INSTALLATION: 4 HOURS

SUPPLIED PARTS:

- 1x Activation box
- 6 mtrs 7 core cable
 - Solder
 - Heatshrink
 - Cable Ties
- 4x Self drilling screws
 - 2x Male Pins
- 1x Cable grommet
- 2x Wire tap connector
 - 2x Female blade
- 10x Ferrule crimps

TADANO AML M1/M2 LIGHT INSTALLATION

Read all instructions before commencing

PRE-INSTALLATION CHECKS

1. Set up machine on full outriggers and raise the boom so there are no errors or buzzers active. Set-up computer for main hook, full outriggers.
2. Raise any hook to an ATB alarm situation. Check that the crane motions winch up, luff down, and tele out functions are cut off. Check that the “safe” crane motions winch down, tele in and luff up are operable.
3. Whilst still in alarm condition, switch the ATB over-ride and verify that the unsafe functions are now operable.
 - note: be careful not to overwind hook
4. Repeat steps 2-3 with the other hook.
5. Locate the button on the AML screen on the bottom right hand corner with a symbol of an exclamation mark. Whilst holding this button on, check that all unsafe motions (Luff down, winch up, Tele out) are in-operable and safe functions (luff up, winch down, tele in) are operable.
6. Then turn PTO switch to PTO II. Test that all unsafe functions are operational with PTO II switch on.
 - Beware: Autostop functions will not operate during over-ride.
7. When the exclamation mark button is pressed also verify that the buzzer is sounding.
 - Should any of these tests fail call Microtec for service

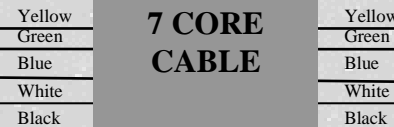
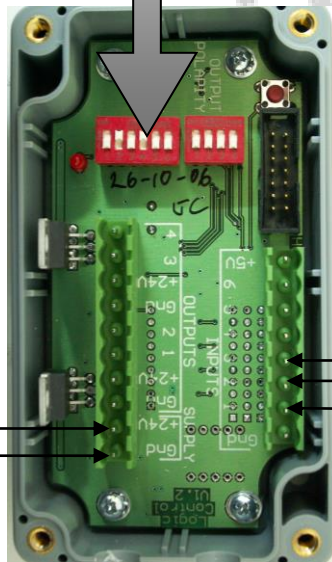
INSTALLATION OF INPUTS

PREINSTALLATION PREPARATION

1. Isolate batteries during installation with isolator switch.
2. Remove seat in cabin
3. Remove the AML unit to expose the contacts on the ATB over-ride.
4. Remove side panel located on the left hand side of seat to expose underneath the gear shift lever.
5. Remove the panel at the rear of the cabin on the left hand side to expose the connections to relays and fuses.
6. Fit the activation box in a clear area behind this panel. If no place behind panel is suitable, it can be fitted externally. It is preferable for installation that this unit is kept near this area though.

CONNECTIONS TO TADANO (TL) AML M1/M2

SWITCH NO.	SWITCH POSITION
1	Off
2	On
3	Off
4	Off
5	Off
6	On



❖ Unused from 7 core cable may be cut off from the loom.

Use ferrule crimps provided to make the connections to the activation box. You may also need to shorten the length of the ferrules so the lid can close easily.

SEE NOTE 1

CRANE CCT.

SEE NOTE 3

Connect to wire number '259', color Red/Red-red on connector on main loom from AML CN1

CRANE CCT.

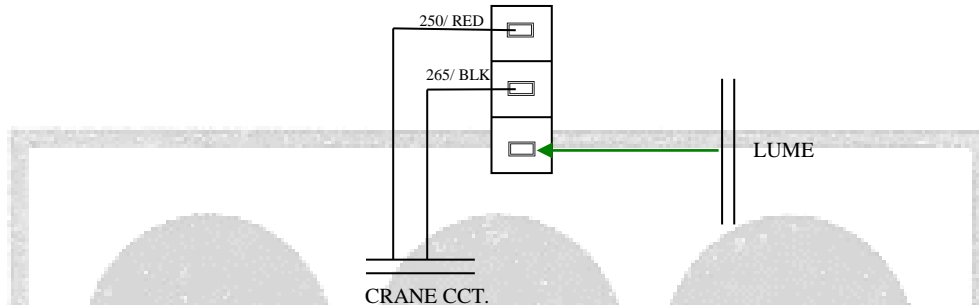
SEE NOTE 2

SEE NOTE 4

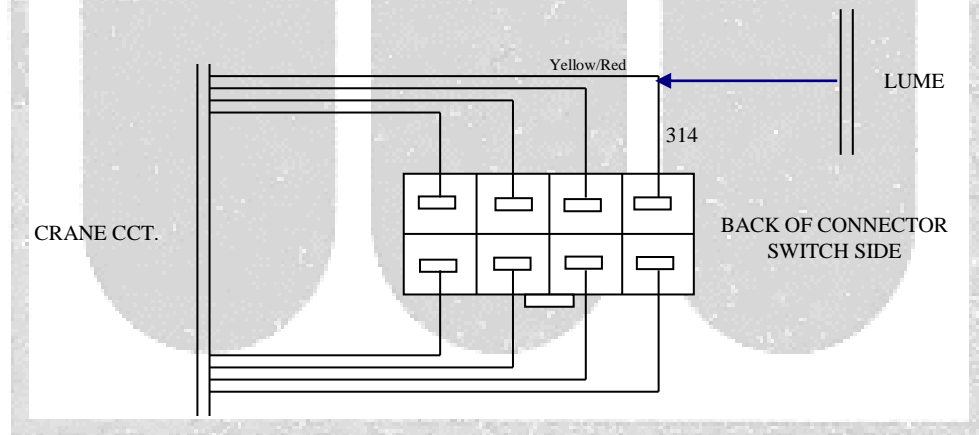
PTO SWITCH

NOTES

- 1
- Remove the switch from the panel and inspect the connections to make sure they are the same as the diagram below.
 - Connect the green wire to the normally closed contact of the switch (the only remaining free contact).



- 2
- Remove the 4 screws to remove the PTO switch.
 - Follow the connections to the switch to a connector.
 - Locate wire labelled 314 as shown in the diagram below.
 - Remove the male pin out of the connector with a small flat screwdriver.
 - Use the male pin supplied and crimp/solder the original wire and the blue wire from the loom together.
 - Insert the pin into the housing.



- 3
- At the rear of the AML computer, locate connector CN1.
 - Follow this loom a short distance till you come across a few connectors.
 - Find wire colour Red/Red-Red, wire number '259'.
 - Connect the yellow wire from the loom to this wire my using wire tap crimp or solder and heatshrink supplied.

- 4
- Locate the connector from the PTO switch.
 - Test with a multimeter all the contacts on the connector for +24V when the switch is turned to the PTO I position.
 - Connect the white wire to this contact using the same method as the blue wire. (See note 2)
 - Locate a suitable earth point. Any bolt connected to the chassis is suitable.
 - Connect the eye terminal to the black wire and fix to the common earth point.
-

EXTRA NOTES

WIRE COLOUR CODE:

EXAMPLE: Red/Yellow-Blue

- Red = Main wire colour
- Yellow = Vertical line colour
- Blue = Horizontal line colour

